

Coaxial Surge Protector

CXCGPS-N/MF



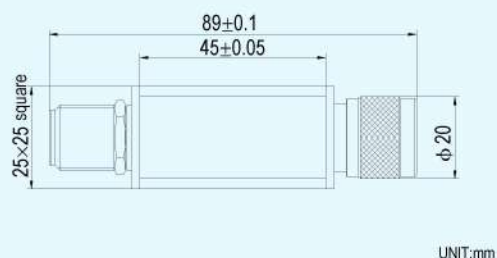
The CXCGPS - N/MF surge protector is designed to protect terminals connected to coaxial cables against transient overvoltage due to lightning.

The CXCGPS is a combination gas tube / clamping diode, which allows a high discharge current with a low residual voltage and low insertion losses.

Equipped with coaxial connectors(N type)

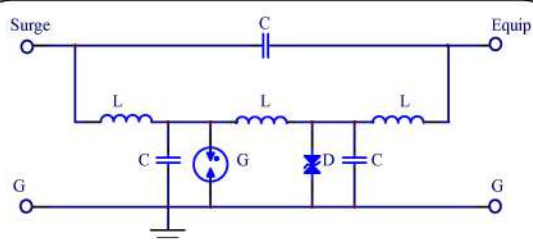
- Coaxial Surge Protector
- High discharge current
- Low residual voltage
- Compact structure
- Easy mounting

Dimensions



UNIT:mm

Electrical diagrams



GDT: 2-Electrode Gas tube
 C: Capacitance
 D: Diode combination
 L: Inductance

Characteristics

CITEL Part Number	CXCGPS-N/MF	
Operating Voltage		<20 VDC
Nominal discharge current (8/20 μs)	In	5 KA
Maxium discharge current (8/20 μs)	I _{max}	10 KA
Voltage protection level (1KV 10/700 μs)	U _P	≤ 50 V
Frequency range	Fr	1475 ~ 1675MHz
Insertion Loss	IL	≤ 0.2 dB
VSWR		≤ 1.15
Response Time	Ta	≤ 10 ns
Leaking current at U _c	I _c	≤ 20 μA
Connector	Surge:N(Female) / Equip:N(Male)	
Ingress protection	IP 20	
Operating temperature range	-25°C ~ +85°C	